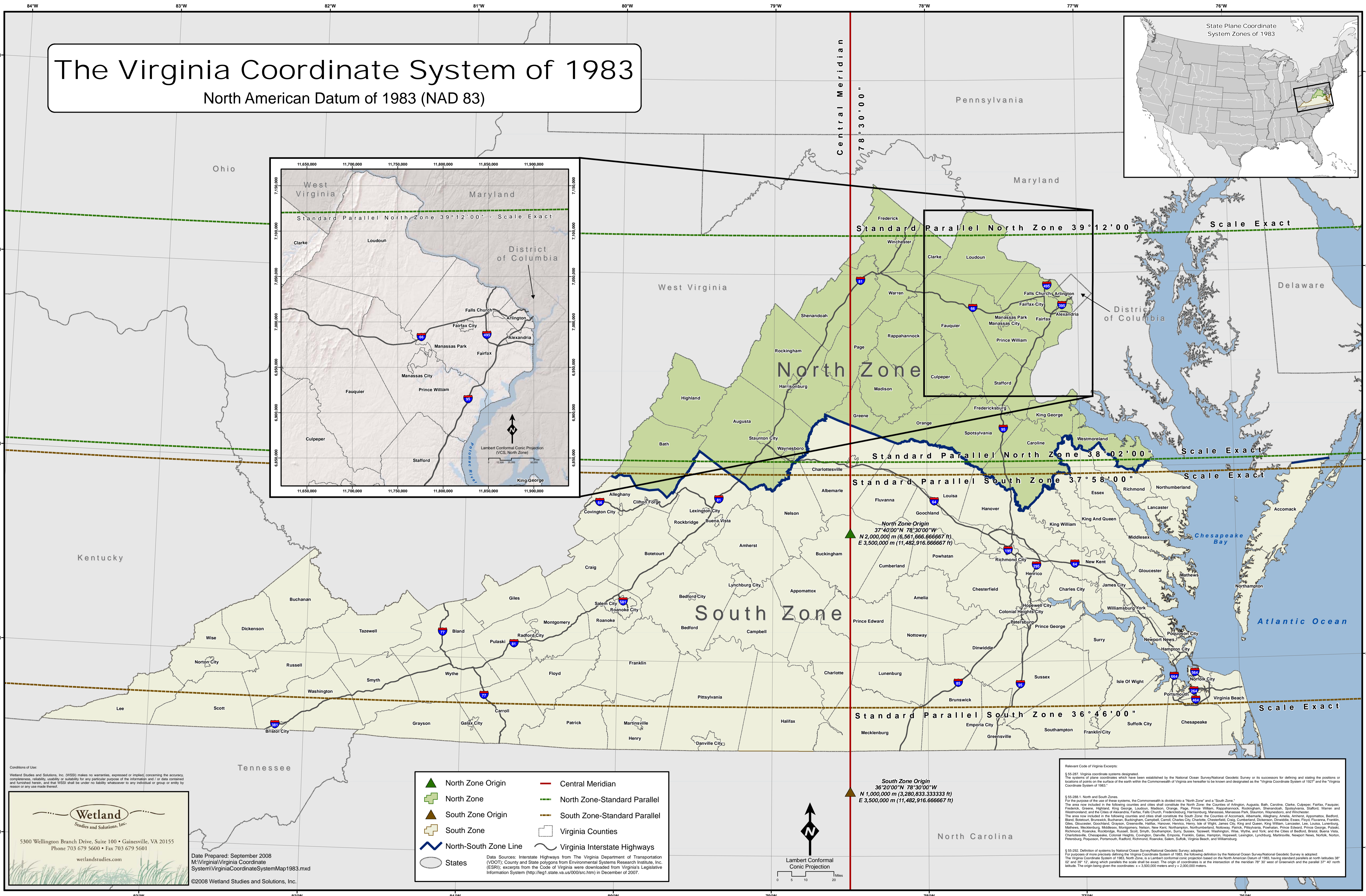
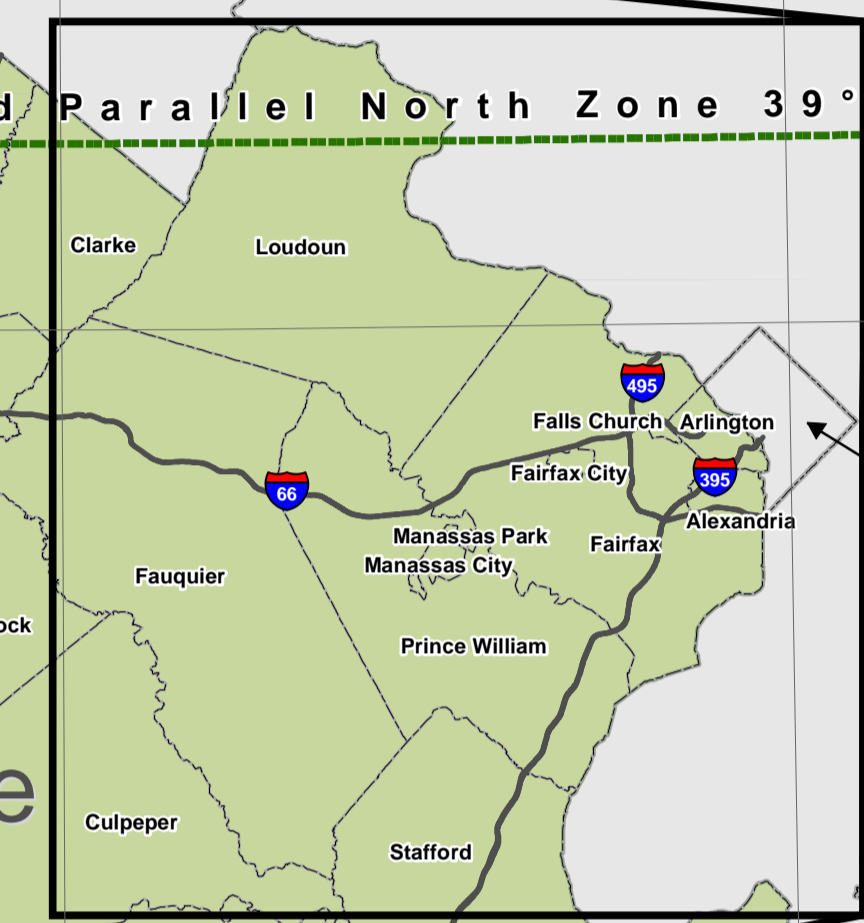
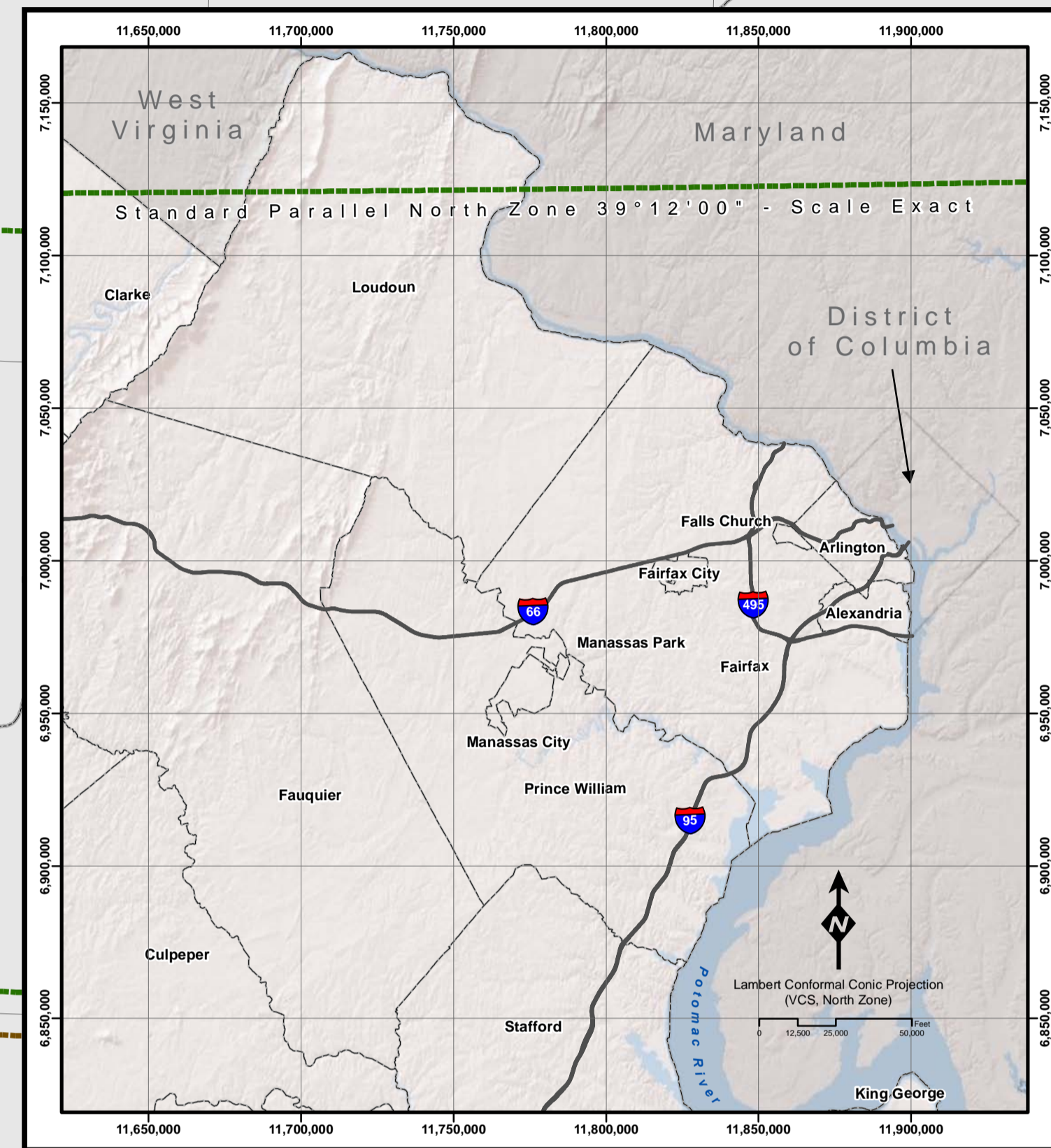
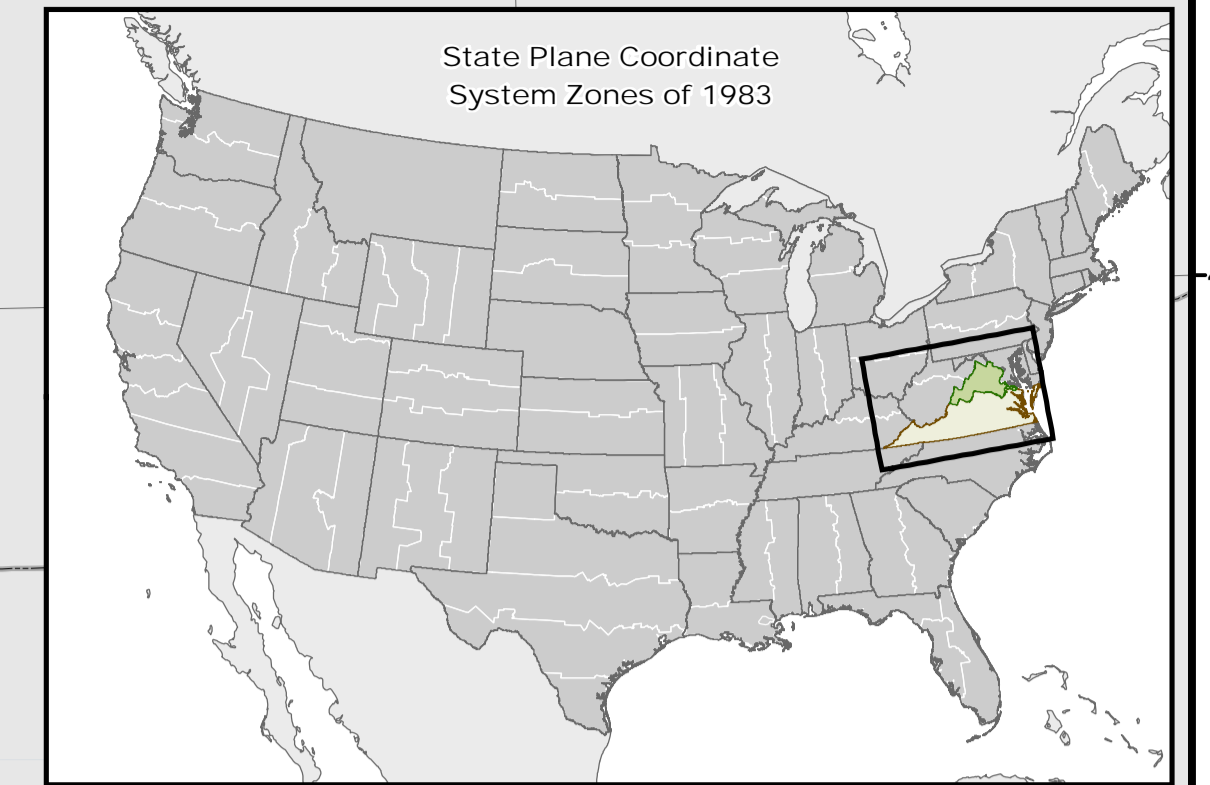


The Virginia Coordinate System of 1983

North American Datum of 1983 (NAD 83)



Wetland Studies and Solutions, Inc.

5300 Wellington Branch Drive, Suite 100 • Gainesville, VA 20155
Phone 703 679 5600 • Fax 703 679 5601

wetlandstudies.com

Legend:

- North Zone Origin
- North Zone
- South Zone Origin
- South Zone
- North-South Zone Line
- States
- Central Meridian
- North Zone-Standard Parallel
- South Zone-Standard Parallel
- Virginia Counties
- Virginia Interstate Highways

Date Prepared: September 2008
M:\Virginia\Virginia Coordinate System\VirginiaCoordinateSystemMap1983.mxd

©2008 Wetland Studies and Solutions, Inc.

Data Sources: Interstate Highways from The Virginia Department of Transportation (VDOT); County and State polygons from Environmental Systems Research Institute, Inc. (ESRI); excerpts from the Code of Virginia were downloaded from Virginia's Legislative Information System (<http://leg1.state.va.us/000/src.htm>) in December of 2007.

Relevant Code of Virginia Excerpts:

§ 55-287. Virginia coordinate systems designated.
The systems of plane coordinates which have been established by the National Ocean Survey/National Geodetic Survey or its successors for defining and stating the positions or locations of points on the surface of the earth within the Commonwealth of Virginia are hereafter to be known and designated as the "Virginia Coordinate System of 1927" and the "Virginia Coordinate System of 1983."

§ 55-288.1. North and South Zones.
For the purpose of the use of these systems, the Commonwealth is divided into a "North Zone" and a "South Zone."
The area now included in the following counties and cities shall constitute the North Zone: the Counties of Arlington, Augusta, Bath, Caroline, Clarke, Culpeper, Fairfax, Fauquier, Frederick, Greene, Highland, King George, Loudoun, Madison, Orange, Page, Prince William, Rappahannock, Rockingham, Shenandoah, Spotsylvania, Stafford, Warren and Westmoreland; and the Cities of Alexandria, Falls Church, Fredericksburg, Harrisonburg, Manassas, Manassas Park, Staunton, Waynesboro, and Winchester.
The area now included in the following counties and cities shall constitute the South Zone: the Counties of Accomack, Albemarle, Alleghany, Amelia, Appomattox, Bedford, Bland, Botetourt, Brunswick, Buchanan, Buckingham, Campbell, Carroll, Charles City, Charlotte, Chesterfield, Craig, Cumberland, Dickenson, Essex, Floyd, Fluvanna, Franklin, Giles, Gloucester, Goochland, Halifax, Hanover, Henrico, Henry, Isle of Wight, James City, King and Queen, King William, Lancaster, Lee, Louisa, Lunenburg, Mathews, Mecklenburg, Middlesex, Montgomery, Nelson, New Kent, Northampton, Northumberland, Nottoway, Patrick, Pittsylvania, Powhatan, Prince Edward, Prince George, Pulaski, Richmond, Roanoke, Rockbridge, Russell, Scott, Smyth, Southampton, Surry, Sussex, Tazewell, Washington, Wise, Wythe, and York; and the Cities of Bedford, Bristol, Buena Vista, Charlottesville, Chesapeake, Colonial Heights, Covington, Danville, Emporia, Franklin, Galax, Hampton, Hopewell, Lexington, Lynchburg, Martinsville, Newport News, Norfolk, Norton, Petersburg, Poquoson, Portsmouth, Radford, Richmond, Roanoke, Salem, Suffolk, Virginia Beach, and Williamsburg.

§ 55-292. Division of systems by National Ocean Survey/National Geodetic Survey adopted.
For purposes of more precisely defining the Virginia Coordinate System of 1983, the following definition by the National Ocean Survey/National Geodetic Survey is adopted: The Virginia Coordinate System of 1983, North Zone, is a Lambert conformal conic projection based on the North American Datum of 1983, having standard parallels at north latitudes 38° 02' 00" and 39° 12' 00" along which parallels the scale shall be exact. The origin of coordinates is at the intersection of the meridian 78° 30' west of Greenwich and the parallel 37° 40' north latitude. The origin being given the coordinates: x = 3,500,000 meters and y = 2,000,000 meters.